

MONTHLY MEMBERSHIP PROGRESS REPORT

District 14 U

Results as of: 7/31/2019

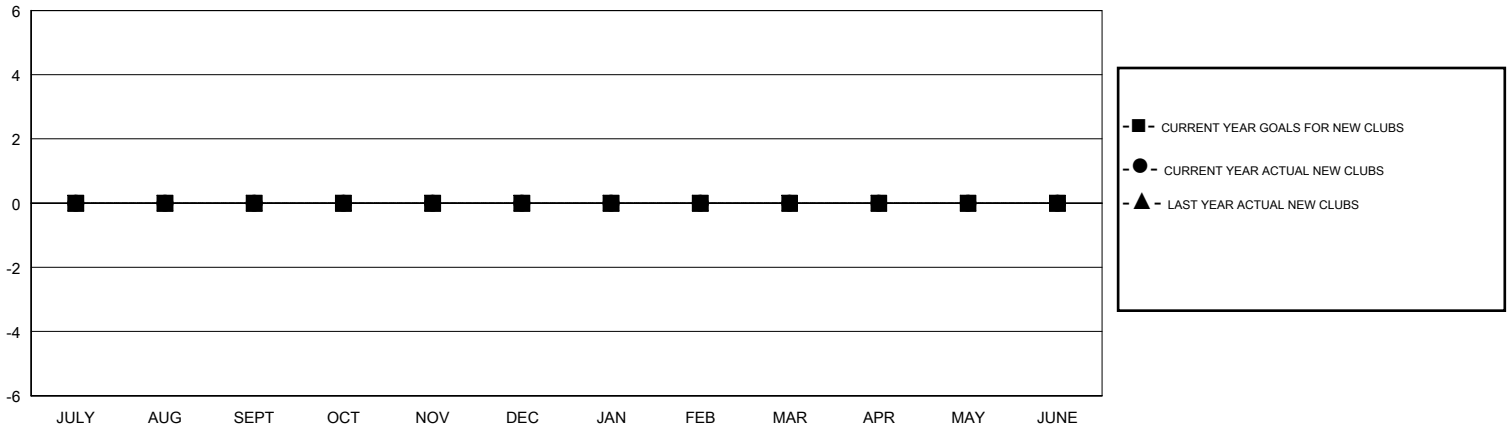
GMT:

LOCATION PENNSYLVANIA

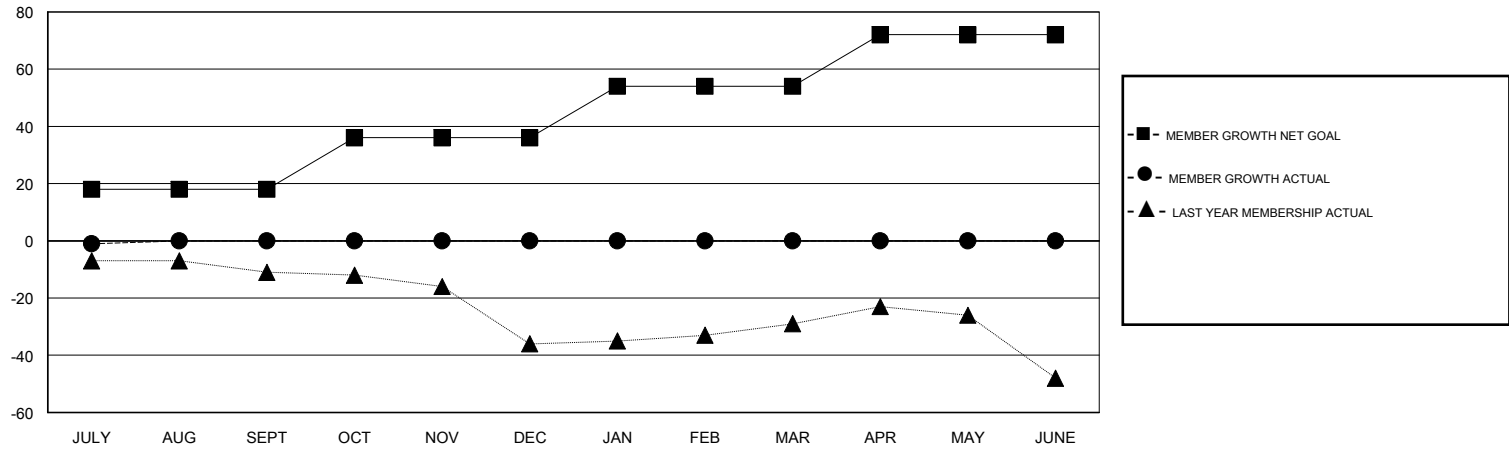
GMT CA

| Clubs | | | | Members | | | |
|-----------------------|---------------|-----------|---------------|-----------------------|------------------------|----------------------|--|
| RESULTS FOR 2019-2020 | | | | RESULTS FOR 2019-2020 | | | |
| QUARTER | NEW CLUB GOAL | NEW CLUBS | DROPPED CLUBS | QUARTER | MEMBER GROWTH NET GOAL | MEMBER GROWTH ACTUAL | DROPPED MEMBERS ACTUAL (including transfers) |
| JULY/AUG/SEPT | 0 | 0 | 0 | JULY/AUG/SEPT | 18 | 10 | 9 |
| OCT/NOV/DEC | 0 | 0 | 0 | OCT/NOV/DEC | 18 | 0 | 0 |
| JAN/FEB/MAR | 0 | 0 | 0 | JAN/FEB/MAR | 18 | 0 | 0 |
| APR/MAY/JUNE | 0 | 0 | 0 | APR/MAY/JUNE | 18 | 0 | 0 |

GOALS AND ACTUAL NEW CLUBS CUMULATIVE



GOALS AND ACTUAL MEMBERS CUMULATIVE



| | | |
|------------------------|---|-------------------------------------|
| DROPPED CLUBS: 0 | 6 CLUBS OF 32 ADDED 1 OR MORE NEW MEMBERS | GENDER DISTRIBUTION |
| | | MALE 688 (69.78%) |
| | | FEMALE 298 (30.22%) |
| DROPPED MEMBERS | CLICK HERE FOR CUMULATIVE MEMBERSHIP DATA | TOTAL FAMILY UNIT MEMBERS 211 |
| DECEASED 0 | | FAMILY MEMBERS PAYING HALF DUES 108 |
| CLUB CANCELLED 0 | | |
| OTHER 9 | | |
| TOTAL 9 | | |